

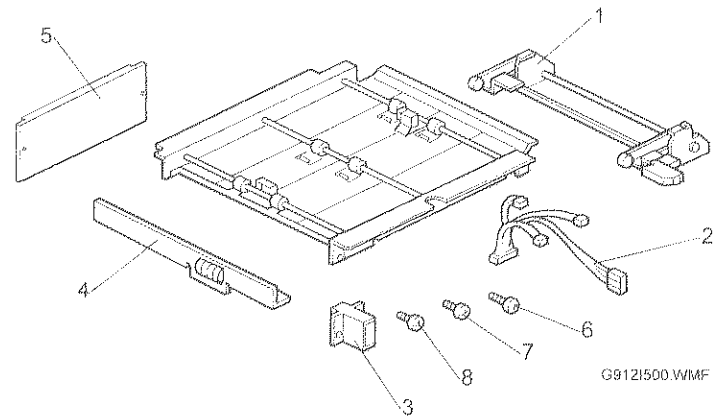
# BRIDGE UNIT FOR MAILBOX (Machine Code: G912)

## INSTALLATION PROCEDURE For Machine Code: A232 Copier

### ACCESSORY CHECK

Check the accessories in the box against the following list.

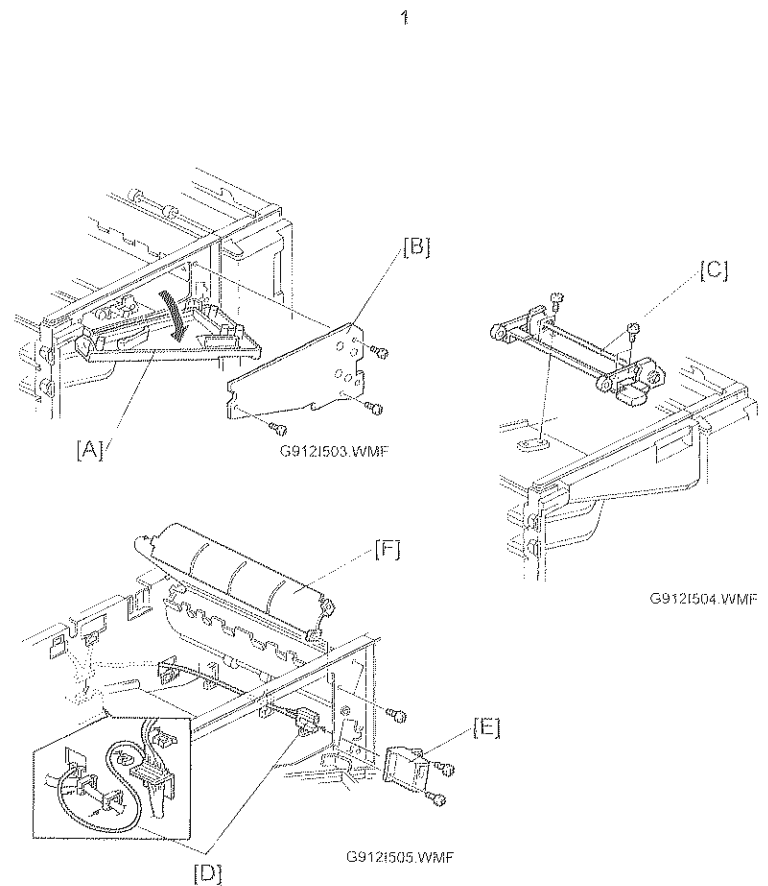
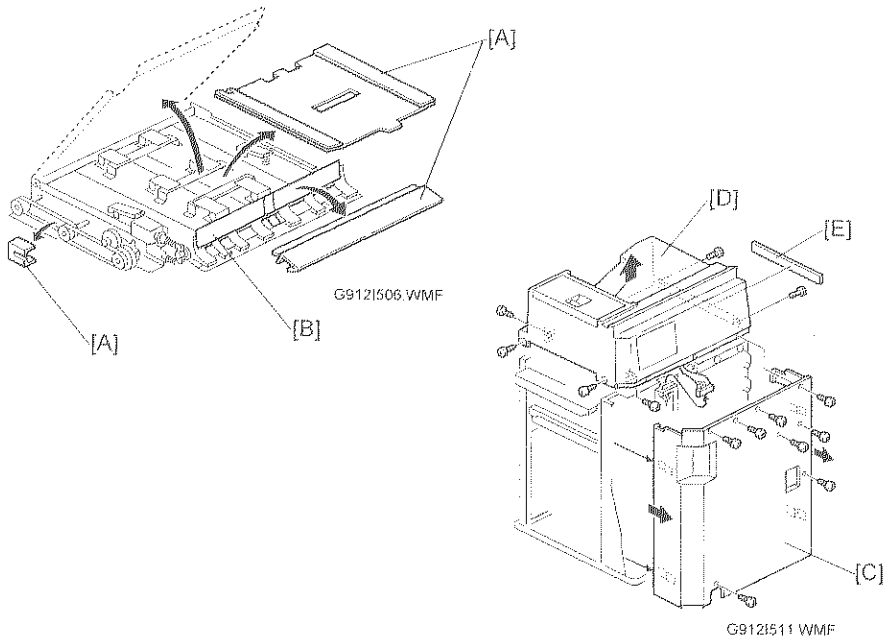
No.	Description	Q'ty	Note
1	Guide Plate Bracket	1	
2	Cable	1	
3	Cover Switch	1	
4	Grounding Bracket	1	
5	Finisher Shielding Plate	1	
6	Screw – M4 x 8	9	
7	Screw – M4 x 4	4	
8	Screw – M3 x 8	2	



**NOTE:** THIS UNIT MUST BE INSTALLED BY A CUSTOMER SERVICE REPRESENTATIVE WHO HAS COMPLETED THE TRAINING COURSES ON THE BASE MACHINE AND THIS UNIT

P/N: G9128610  
Printed in Japan

### INSTALLATION PROCEDURE



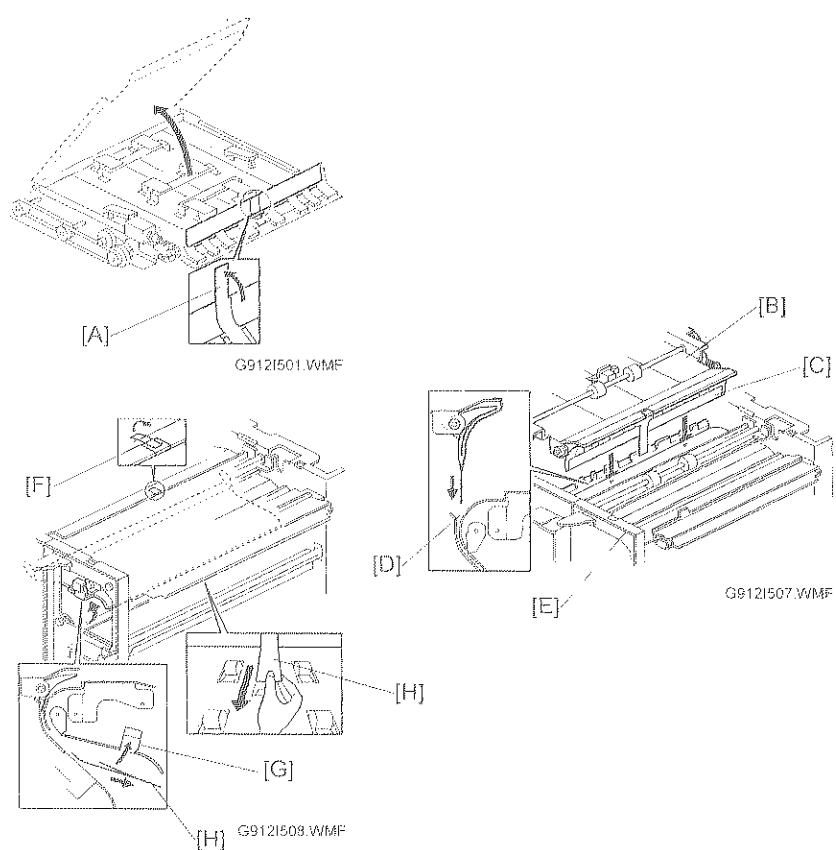
#### CAUTION

Unplug the main machine power cord before starting the following procedure.

**NOTE:** 1) This bridge unit for the mailbox must be installed when the finisher (A697) will be installed.  
2) The finisher (A697) can be installed only for NAD40 (A232) machines.

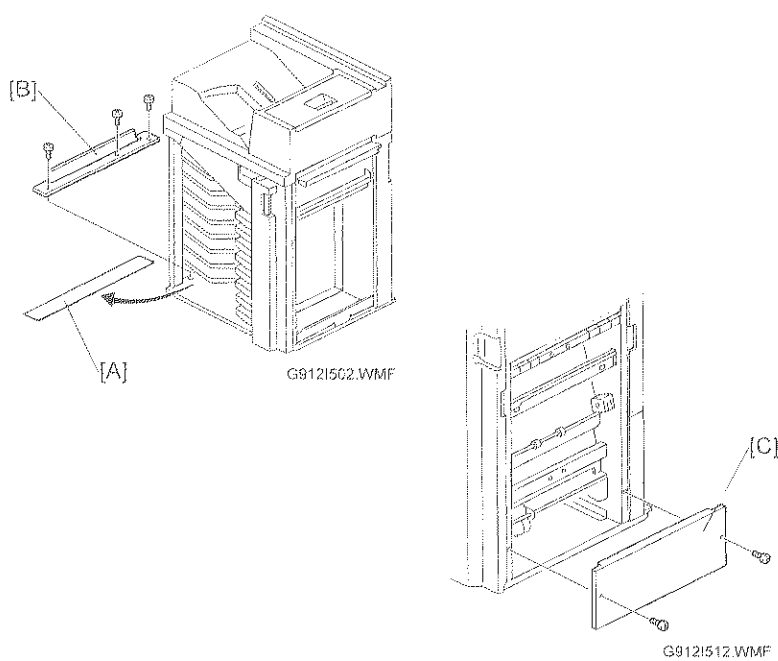
1. Unpack the bridge unit and remove the shipping retainers [A].  
**NOTE:** Do not remove the protective sheet [B] at this time.
2. Remove the mailbox if it has been installed.
3. Remove the rear cover [C] of the mailbox (8 screws).
4. Remove the proof tray unit [D] (6 screws, 1 connector).
5. Remove the cover [E].

6. Open the left front cover [A] of the mailbox, and remove the inner plate [B] (3 screws).
7. Install the guide plate bracket [C] (4 screws – M4 x 4).
8. Route the cable [D] and clamp it as shown.
9. Connect the cover switch [E] to the cable then install the cover switch (2 screws – M4 x 8).
10. Remove the paper guide plate [F] (2 screws).



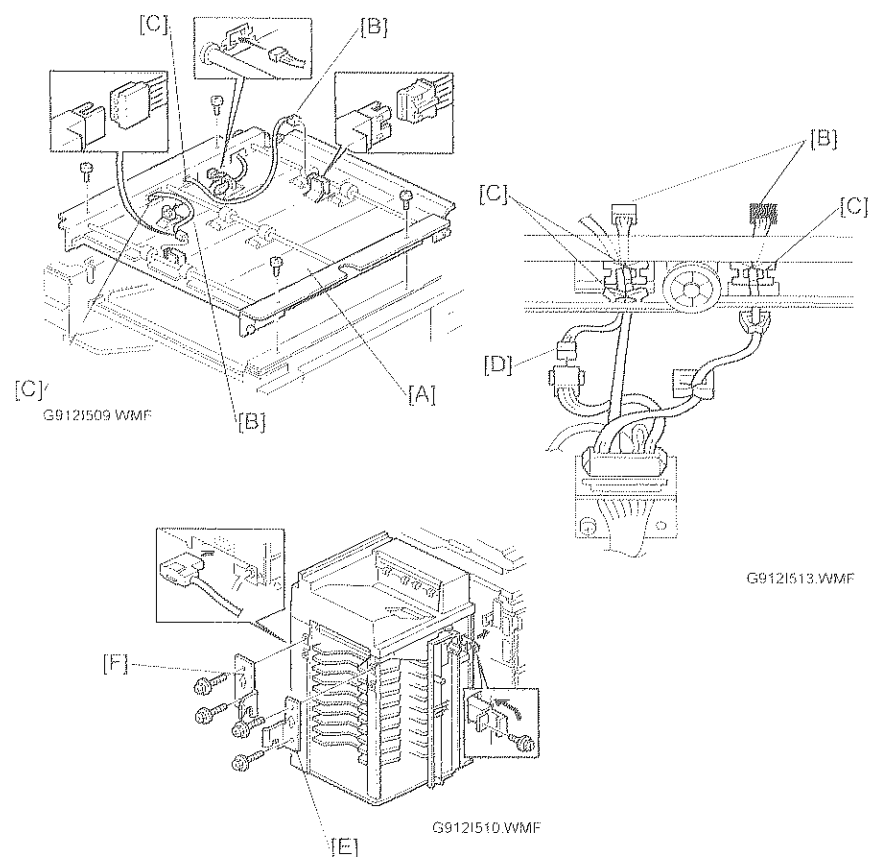
11. Pull up the tab [A] of the protective sheet.  
**NOTE:** 1) Do not remove the protective sheet at this time.  
 2) Make sure that all mylars are held between the two folded halves of the protective sheet.
12. Turn over the bridge unit [B] and insert the protective sheet [C] into the gap [D] between the paper guides, then put the bridge unit on the mailbox [E].  
**NOTE:** When holding the bridge unit, do not touch the timing belt. Otherwise the timing belt may come off the gear.
13. Remove the tape [F] of the protective sheet.
14. Open the upper paper guide [G] then pull out the protective sheet [H].  
**NOTE:** Check that all mylars are set into the gap between the paper guides.

4



22. Remove the seal [A].
23. Attach the grounding bracket [B] (3 screws – M4 x 8).
24. Attach the shielding plate [C] to the finisher (2 screws – M3 x 8).
25. Attach the finisher to the mailbox (refer to the finisher installation procedure).
26. Turn on the main switch of the main machine and check the bridge unit operation. (Select a copy mode that uses the finisher.)

6



15. Secure the bridge unit [A] (4 screws – M4 x 8).
16. Route the cables [B] through the openings [C].
17. Route the solenoid harness [D] through the opening [C].
18. Connect the cables to the solenoid and sensors and clamp the cable as shown.
19. Reinstall the rear cover and proof tray unit.
20. Install the mailbox on the main machine (refer to the Mailbox Installation procedure for more detail).
- When the 3000 sheet finisher (A697) is going to be installed, do steps 21 to 25.**
21. Install the front joint bracket [E] and rear joint bracket [F] which are contained in the finisher's accessory box.

5